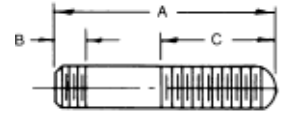


Stainless Steel Fixture Studs
style B fit

- ▶ Made from 300 series stainless steel
- ▶ Style B studs



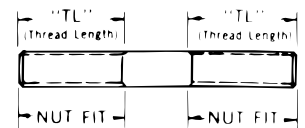
Style B

PART #	Thread	A	B	C
6140	#6-32	1	7/32	1/2
6141	#6-32	1-1/4	7/32	5/8
6142	#6-32	1-1/2	7/32	3/4
6143	#6-32	1-3/4	7/32	3/4
6144	#6-32	2	7/32	3/4
6165	#8-32	1	7/32	1/2
6166	#8-32	1-1/4	7/32	5/8
6167	#8-32	1-1/2	7/32	3/4
6168	#8-32	1-3/4	7/32	3/4
6169	#8-32	2	7/32	3/4
6194	#10-24	1	7/32	1/2
6195	#10-24	1-1/4	7/32	5/8
6196	#10-24	1-1/2	7/32	3/4
6197	#10-24	1-3/4	7/32	3/4
6198	#10-24	2	7/32	3/4
6199	#10-32	1	7/32	1/2
6200	#10-32	1-1/4	7/32	5/8
6201	#10-32	1-1/2	7/32	3/4
6202	#10-32	1-3/4	7/32	3/4

PART #	Thread	A	B	C
6203	#10-32	2	7/32	3/4
6250	1/4-20	1-1/4	9/32	5/8
6251	1/4-20	1-1/2	9/32	5/8
6252	1/4-20	1-3/4	9/32	3/4
6253	1/4-20	2	9/32	3/4
6254	1/4-20	2-1/2	9/32	3/4
6255	1/4-20	3	9/32	1
6312	5/16-18	1-1/2	11/32	5/8
6313	5/16-18	2	11/32	1
6314	5/16-18	2-1/2	11/32	1-1/4
6315	5/16-18	3	11/32	1-3/8
6316	5/16-18	3-1/2	11/32	1-1/2
6317	5/16-18	4	11/32	1-1/2
6375	3/8-16	1-5/8	11/32	3/4
6376	3/8-16	2	11/32	1
6377	3/8-16	2-1/2	11/32	1-1/4
6378	3/8-16	3	11/32	1-3/8
6379	3/8-16	3-1/2	11/32	1-1/2
6380	3/8-16	4	11/32	1-1/2

- ▶ Carbon steel, black oxide finish
- ▶ Dimensions shown in millimeters
- ▶ Type A stud only

Fixture Studs
metric



PART #	Thread	Overall Length	Thread Length
M8 x 80	M8 x 1.25	80mm	31mm
M8 x 110	M8 x 1.25	110	31
M8 x 125	M8 x 1.25	125	31
M10 x 80	M10 x 1.5	80	35
M10 x 95	M10 x 1.5	95	35
M10 x 110	M10 x 1.5	110	35
M10 x 125	M10 x 1.5	125	35
M10 x 150	M10 x 1.5	150	35
M12 x 80	M12 x 1.75	80	39
M12 x 110	M12 x 1.75	110	39
M12 x 125	M12 x 1.75	125	39
M12 x 150	M12 x 1.75	150	39
M12 x 175	M12 x 1.75	175	39
M16 x 80	M16 x 2.0	80	47
M16 x 110	M16 x 2.0	110	47
M16 x 125	M16 x 2.0	125	47
M16 x 150	M16 x 2.0	150	47
M16 x 175	M16 x 2.0	175	47
M16 x 200	M16 x 2.0	200	47